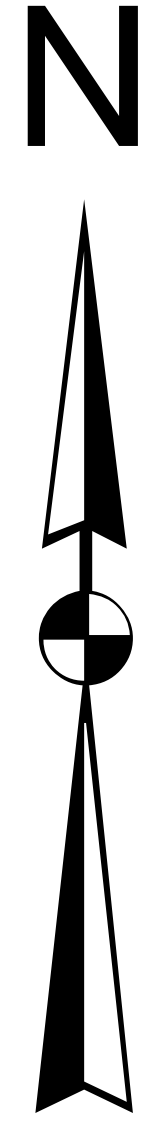
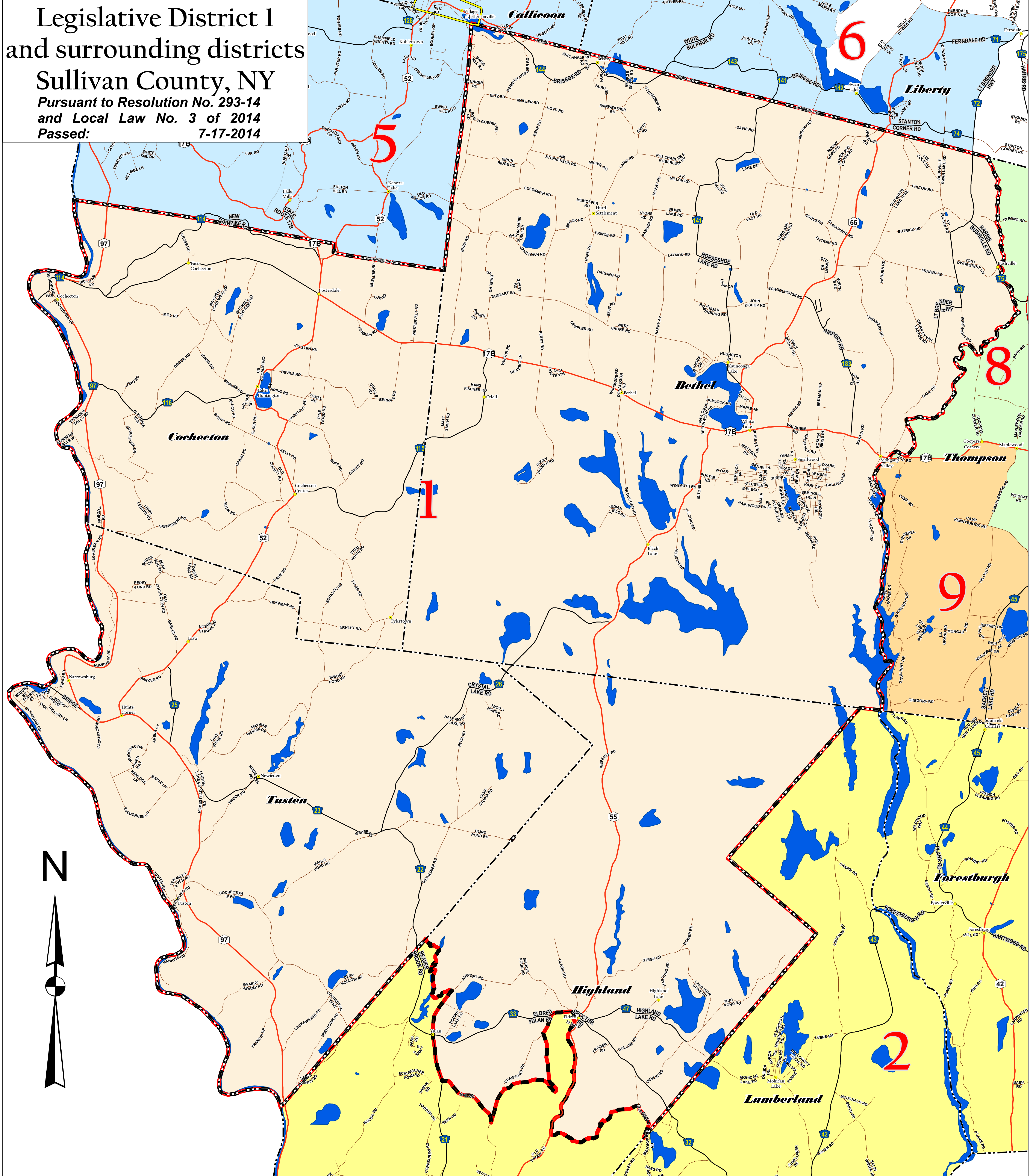


Legislative District 1 and surrounding districts

Sullivan County, NY

Pursuant to Resolution No. 293-14
and Local Law No. 3 of 2014
Passed: 7-17-2014



The Legislative District boundaries on this map were drawn pursuant to a plan entitled: "Sullivan County Proposed Legislative Redistricting Plan" Created by:
Skyline Consulting
3050 Skyline Drive
Schenectady, NY 12306

Sullivan County Real Property Tax Services
100 North Street, Monticello, NY 12701
(845) 807-0221- Fax: (845) 807-0232
0 0.5 1 Miles

DATE: 6/16/2015
Technician: Christopher J. Knapp

Legislative District of interest is highlighted with a heavy red & black outline.

DISCLAIMER: SULLIVAN COUNTY MAKES NO REPRESENTATIONS AS TO THE ACCURACY OF THE INFORMATION IN THE MAPPING DATA. SULLIVAN COUNTY SPECIFICALLY PROVIDES THIS INFORMATION AS IS. SULLIVAN COUNTY EXPRESSLY DISCLAIMS RESPONSIBILITY FOR DAMAGES OR LIABILITY, WHATSOEVER, THAT MAY ARISE FROM THE USE OF THIS MAP.

Legislative districts are labeled in red.

Legislative Districts	District 1	District 2	District 5	District 8	District 9	Other Layers	Towns	Villages	Hamlets	Interstate Highways	State/Federal Routes	County Roads	Local Roads	Water Bodies
------------------------------	------------	------------	------------	------------	------------	---------------------	-------	----------	---------	---------------------	----------------------	--------------	-------------	--------------