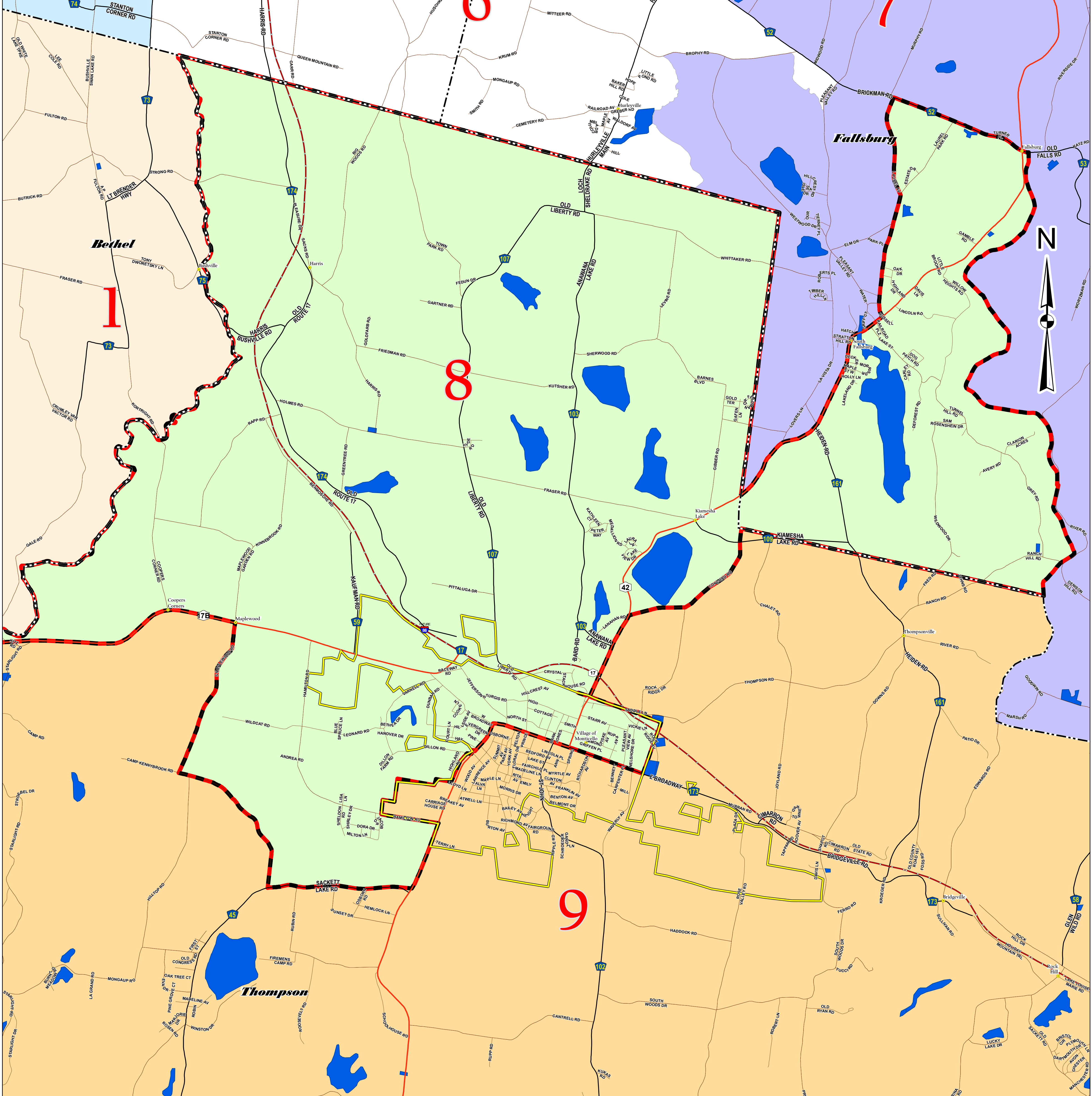


# Legislative District 8 and surrounding districts Sullivan County, NY

Pursuant to Resolution No. 293-14  
and Local Law No. 3 of 2014  
Passed: 7-17-2014



The Legislative District boundaries on this map were drawn pursuant to a plan entitled: "Sullivan County Proposed Legislative Redistricting Plan" Created by: Skyline Consulting 3050 Skyline Drive Schenectady, NY 12306

**Sullivan County Real Property Tax Services**  
 100 North Street, Monticello, NY 12701  
 (845) 807-0221- Fax: (845) 807-0232  
 DATE: 6/16/2015  
 Technician: Christopher J. Knapp

**Disclaimer:** SULLIVAN COUNTY MAKES NO REPRESENTATIONS AS TO THE ACCURACY OF THE INFORMATION IN THE MAPPING DATA. SULLIVAN COUNTY SPECIFICALLY PROVIDES THIS INFORMATION AS IS. SULLIVAN COUNTY EXPRESSLY DISCLAIMS RESPONSIBILITY FOR DAMAGES OR LIABILITY, WHATSOEVER, THAT MAY ARISE FROM THE USE OF THIS MAP.

**Legislative districts are labeled in red.**

<b>Legislative Districts</b>	<b>Other Layers</b>
District 1	Towns
District 5	Villages
District 6	Hamlets
District 7	Interstate Highways
District 8	State/Federal Routes
District 9	County Roads
	Local Roads
	Water Bodies