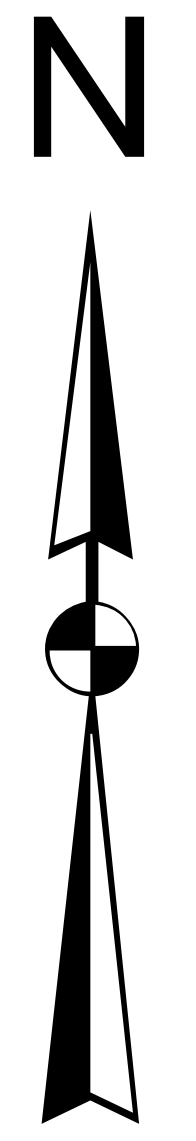
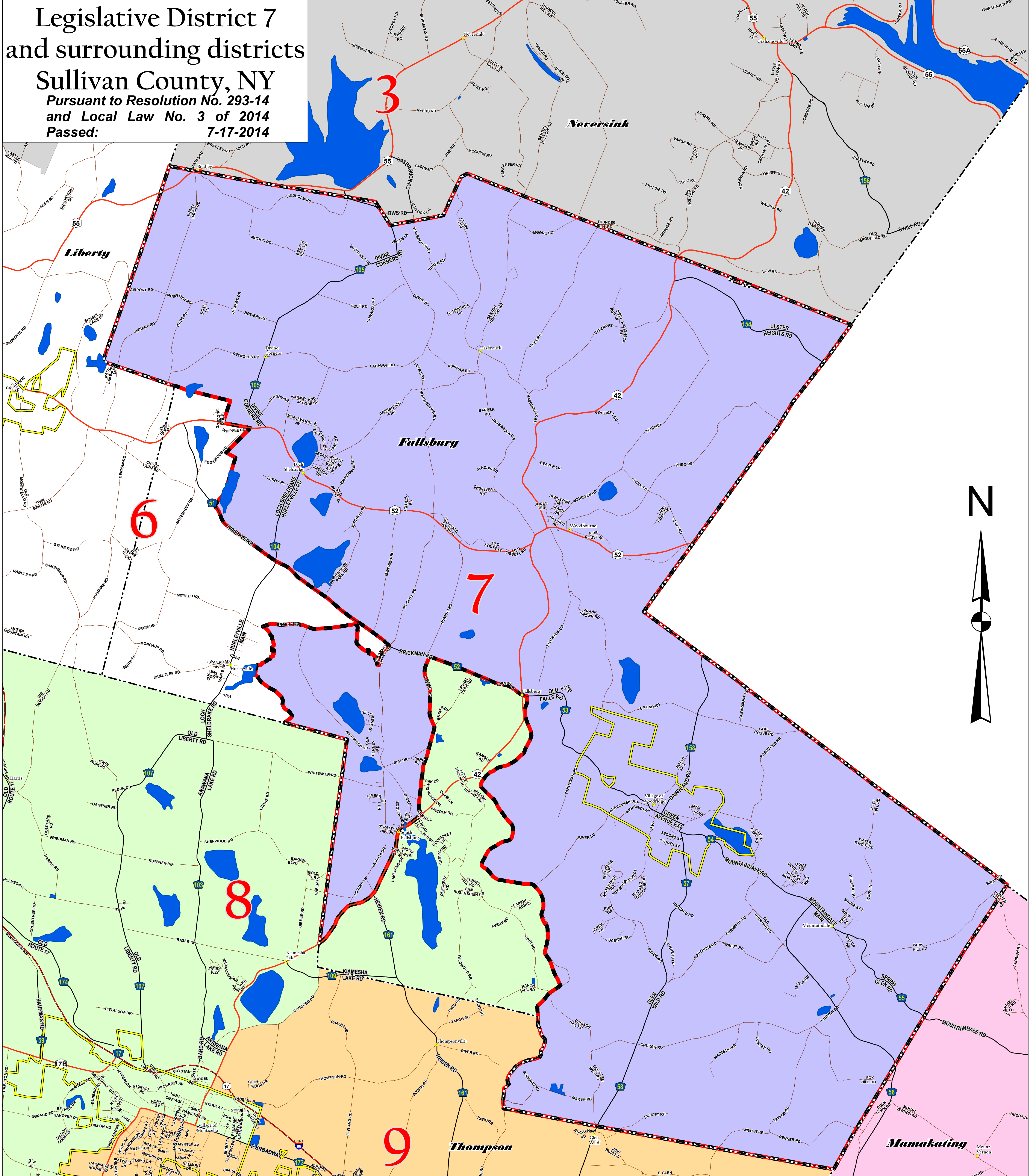


Legislative District 7 and surrounding districts

Sullivan County, NY

Pursuant to Resolution No. 293-14
and Local Law No. 3 of 2014
Passed: 7-17-2014



The Legislative District boundaries on this map were drawn pursuant to a plan entitled: "Sullivan County Proposed Legislative Redistricting Plan" Created by: Skyline Consulting 3050 Skyline Drive Schenectady, NY 12306

Sullivan County Real Property Tax Services

100 North Street, Monticello, NY 12701
(845) 807-0221- Fax: (845) 807-0232

DATE: 6/16/2015
Technician: Christopher J. Knapp

Legislative District of interest is highlighted with a heavy red & black outline.

Legend

Legislative districts are labeled in red.

District 3	District 7	Towns	Interstate Highways
District 4	District 8	Villages	State/Federal Routes
District 6	District 9	Hamlets	County Roads
			Local Roads
			Water Bodies

DISCLAIMER: SULLIVAN COUNTY MAKES NO REPRESENTATIONS AS TO THE ACCURACY OF THE INFORMATION IN THE MAPPING DATA. SULLIVAN COUNTY SPECIFICALLY PROVIDES THIS INFORMATION AS IS. SULLIVAN COUNTY EXPRESSLY DISCLAIMS RESPONSIBILITY FOR DAMAGES OR LIABILITY, WHATSOEVER, THAT MAY ARISE FROM THE USE OF THIS MAP.